



As a leading provider of network equipment for SMBs, NETGEAR® understands the importance of reliable and high performance networks that are SMB budget aware. With the growth of virtualization, cloud-based services and applications like VoIP, video streaming and IP surveillance, SMB networks need to extend beyond simple reliability to performance and security. The NETGEAR S350 Gigabit Smart Switch series is tailored to these essential network needs of your business; delivering unprecedented non-blocking Gigabit bandwidth and solid network security at an affordable cost.

The NETGEAR Smart S350 series consists of five switch models, including 8-, 24-

and 48-port Gigabit Ethernet switches and 8-, and 24-port Gigabit Ethernet PoE+ switches with 2 or 4 SFP ports for fiber uplinks, offering powerful Layer 2 features, enhanced performance and ease of use. They are purposely designed for converged networks where voice, video, data are all carried on a single network platform. Advanced features such as L2/L3/L4 Access Control Lists (ACLs), Quality of Service (QoS), Link Aggregation Control Protocol (LACP) and Spanning Tree Protocol (STP) will ensure a high-speed and highly secured network environment for your business.

The 8-port S350 series switch models are in small “desktop” form factors, which will not take much space to place. The 24- and

48-port models are also rack-mountable. All models include Kensington lock slot to physically secure your switch in open space. The fan-less 8-port models and 24-port non-PoE model will operate silently, ideal for the noise-sensitive environment. The 24-port PoE+ model and 48-port model also work under 33dBA acoustic level. All NETGEAR S350 Series switches support IEEE 802.3az Energy Efficient Ethernet mode, caring power saving for your business. NETGEAR S350 Series is covered by a 5-year limited Hardware Warranty* and extendable support**, offering a worry-free user’s experience at very affordable total cost of ownership.

Highlights

Flexible and cost-effective solution for SMB data, voice and video converged network

- 8/24/48 Gigabit 10/100/1000BASE-T RJ-45 ports
- 55W (GS310TP) or 190W (GS324TP) PoE budget across 8 or 24 Gigabit PoE+ ports (802.3at)

- Dedicated SFP fiber ports: 2 on GS310TP/GS324T/GS324TP and 4 on GS348T
- Non-blocking switching with 16Gbps to 104Gbps line rate fabric
- Fan-less design on GS308T/GS310TP/GS324T; GS324TP and GS348T has max acoustic noise level at 32.8dB and 26dB respectively under 25°C (77°F) ambient

Powerful Connectivity and Security Features

- Advanced VLAN support for better network segmentation
- L2/L3/L4 Access control lists (ACLs) for granular network access control including 802.1x port authentication

Highlights

Powerful Connectivity and Security Features (continued)

- QoS (Quality of Service) for traffic prioritization including port-based, 802.1p and L2/L3/L4 DSCP-based
- Auto “denial-of-service” (DoS) prevention
- IGMP Snooping and Querier for multicast optimization
- Rate limiting and priority queuing for better bandwidth allocation
- Port mirroring for network monitoring
- Energy Efficient Ethernet (IEEE 802.3az) for maximum power savings
- Cable test to troubleshoot connection issues (except for GS324T/GS324TP)
- Easy-to-use Web browser-based management GUI available in English, German and Japanese
- SNMP v1, v2c, v3 and RMON remote monitoring

Smart IT, not Big IT

- Easy to manage via web-Based Management GUI or Smart Control Center (Windows PC required) for multi-switch deployment
- Smart Control Center, a powerful tool for multi-switch discovery, deployment, monitoring and firmware upgrade
- Network Management System (NMS300), allowing all NETGEAR business products to be deployed and managed through this single interface
- Dual firmware images, improving reliability and uptime to your network

NETGEAR quality and reliability

- Industry-leading 5-year Limited Hardware Warranty*
- Minimal down-time with Next-BusinessDay Replacement Warranty
- Get 90-days Free Advanced Technical Support with device registration



Hardware at a Glance

	FRONT				REAR	SIDE
Model Name	Form-Factor	10/100/1000 Base-T RJ45 ports	1000BASE-X Fiber SFP Ports	PoE+ 802.3at Ports (Budget)	Power Supply	Fans
GS308T	Desktop	8			1 external PSU, DC 12V 1.0A	Fan-less
GS310TP	Desktop	8	2	8 PoE+ (55W)	1 external PSU, DC 54V 1.25A	Fan-less
GS324T	Rackmount	24	2		1 internal PSU, fixed	Fan-less
GS324TP	Rackmount	24	2	24 PoE+ (190W)	1 internal PSU, fixed	2 internal fans, fixed
GS348T	Rackmount	48	4		1 internal PSU, fixed	1 internal fan, fixed

Software at a Glance

LAYER 2 FEATURES						
Management	IPv4 ACL and QoS	Pv4 Multicast Filtering	Auto-VOIP/ Auto Video	IEEE (802.3az) Energy Efficient Ethernet	MAC VLANs	Convergence Advanced Features
Web Browser-based GUI (HTTP/HTTPS), PC-Based Smart Control Center Utility (SCC) RMON, SNMP	L2, L3, L4, ingress	IGMP Snooping, Querier, Fast Leave, L2 Multicast Router	Yes	Yes	8K or 16K Max MAC 64 VLANs Static, Dynamic, Voice	LLDP-MED RADIUS 802.1X LACP, STP, SNMP

Performance at a Glance

Model Name	Packet buffer	CPU	ACLs	MAC Address Table ARP Table VLANs	Fabric	Latency (64-byte packets)	Multicast IGMP Groups
GS308T	512 KB	MIPS-4Kec 500MHz single core 128MB DDR RAM 32MB FLASH	100 shared	8K MAC 64 VLANs	16Gbps line-rate	1G Copper: <4.20µs	256
GS310TP					20Gbps line-rate	1G Copper: < 4.20 µs; 1G Fiber: < 3.43 µs	
GS324T		800MHz single core 512MB DDR RAM 2MB SPI NOR 128MB FLASH		16K MAC 64 VLANs	52Gbps line-rate	1G Copper: <3.86 µs	512
GS324TP						1G Copper: <3.74 µs 1G Fiber: <2.90 µs	
GS348T	1.5MB	400MHz 512MB DDR RAM 128MB FLASH			104 Gbps line-rate	1G Copper: <2.86 µs 1G Fiber: <1.74 µs	

Features and Benefits

Hardware Features	
Dedicated SFP Fiber Uplinks	Dedicated SFP ports provides fiber uplinks without sacrificing any downlink Gigabit port. Up to 4 SFP ports provide not only redundant uplinks, but can also build dual redundancy by a trunked uplink with link aggregation and failover, the dual-redundancy, a powerful design for the network virtualization
PoE+ Support on all ports (GS310TP and GS324TP)	Flexible to plug-in or change into high-power PD devices on any port without worrying which one port to plug in and whether it will be running out of PoE+ ports.
Low Acoustics	Fan-less design on GS308T/GS310TP/GS324T, and maximum acoustic noise level at 32.8dB for GS324TP and 26dB for GS348T respectively at 25°C (77°F) ambient for quieter office environment
Energy Efficient Ethernet (IEEE 802.3az)	Maximum power reduction for ongoing operation cost savings.
Software Features	
Advanced per port PoE controls	Remote power management of PoE connected devices including operation scheduling (e.g. Wireless APs, IP security cameras, secure access door locks, IoT devices...)
ACL filtering to permit or deny traffic based on	Provide granular network access control including L2/L3/L4 access control lists (ACLs).
Robust security features: <ul style="list-style-type: none"> • 802.1x authentication (EAP) • Port-based security by locked MAC • DHCP Snooping 	Build a secured, converged network with all types of traffic by preventing external attacks and blocking malware, while allowing secure access for authorized users with RADIUS 802.1x port authentication.
Comprehensive QoS features: <ul style="list-style-type: none"> • Port-based or 802.1p-based prioritization • Layer 3-based (DSCP) prioritization • Port-based ingress and egress rate limiting 	Advanced controls for optimized network performance and better delivery of mission-critical traffic such as voice and video.
Auto-VoIP, Auto-Voice VLAN, and Auto-Video VLAN	Automatic Voice over IP prioritization (Auto-VoIP) simplifies most complex multi-vendor IP telephone deployments either based on protocols (SIP) or on OUI bytes (default database and user-based OUIs) in the phone source MAC address, providing the best class of service to VoIP streams (both data and signaling) over other ordinary traffic by classifying traffic, and enabling correct egress queue configuration. Similarly, Auto-Video VLAN enables IGMP snooping to minimize broadcast streams.
IGMP Snooping	Facilitate fast receiver joins and leaves for multicast streams. Save cost and improve network efficiency by ensuring multicast traffic only reaches designated receivers without the need of an extra multicast router
Protected Ports	Ensure no exchange of unicast, broadcast, or multicast traffic between the protected ports on the switch, thereby improving the security of your converged network. This allows your sensitive phone conversations to stay private and your surveillance video clips can be forwarded to their designated storage device without leakage or alteration.
DHCP Snooping	Ensure IP address allocation integrity by only allowing DHCP messages from trusted DHCP servers and dropping malformed DHCP messages with a port or MAC address mismatch.
Dynamic VLAN Assignment (RADIUS)	IP phones and PCs can authenticate on the same port but under different VLAN assignment policies. Users are free to move around and enjoy the same level of network access regardless of their physical location on the network.
Dual Firmware Images	Dual firmware images for transparent firmware updates with minimum service interruption.

Why is the NETGEAR S350 Series Gigabit Ethernet Smart Switch the right choice for SMBs?

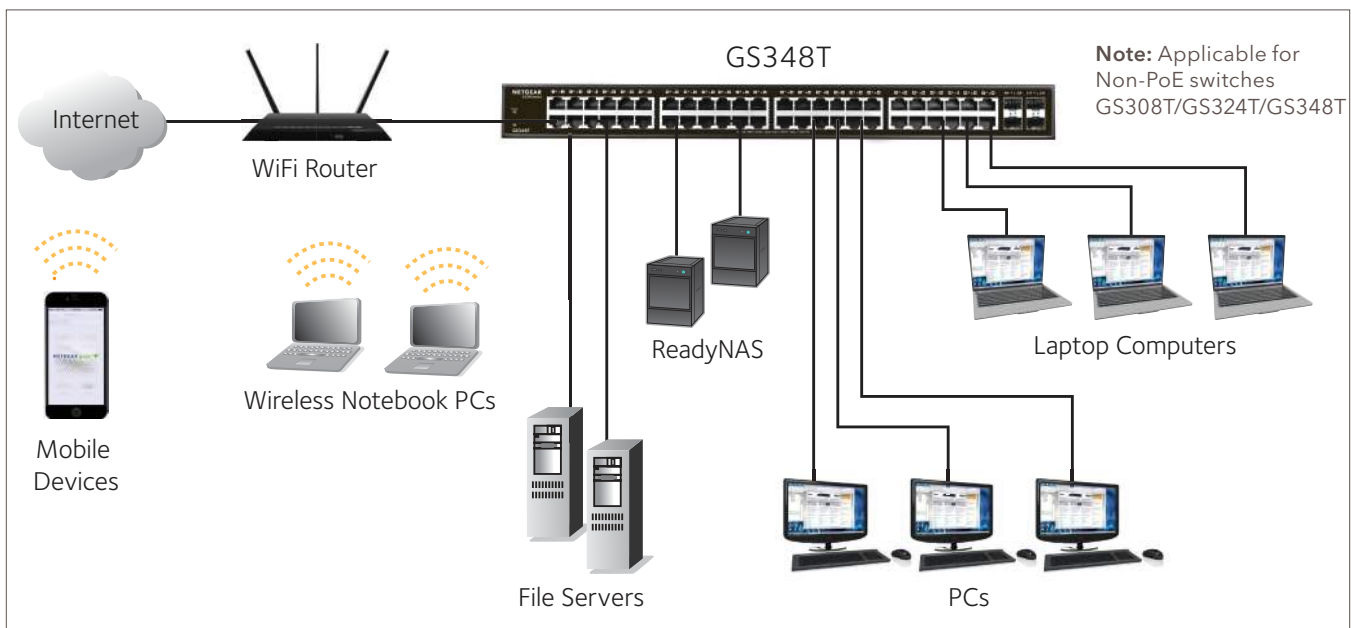
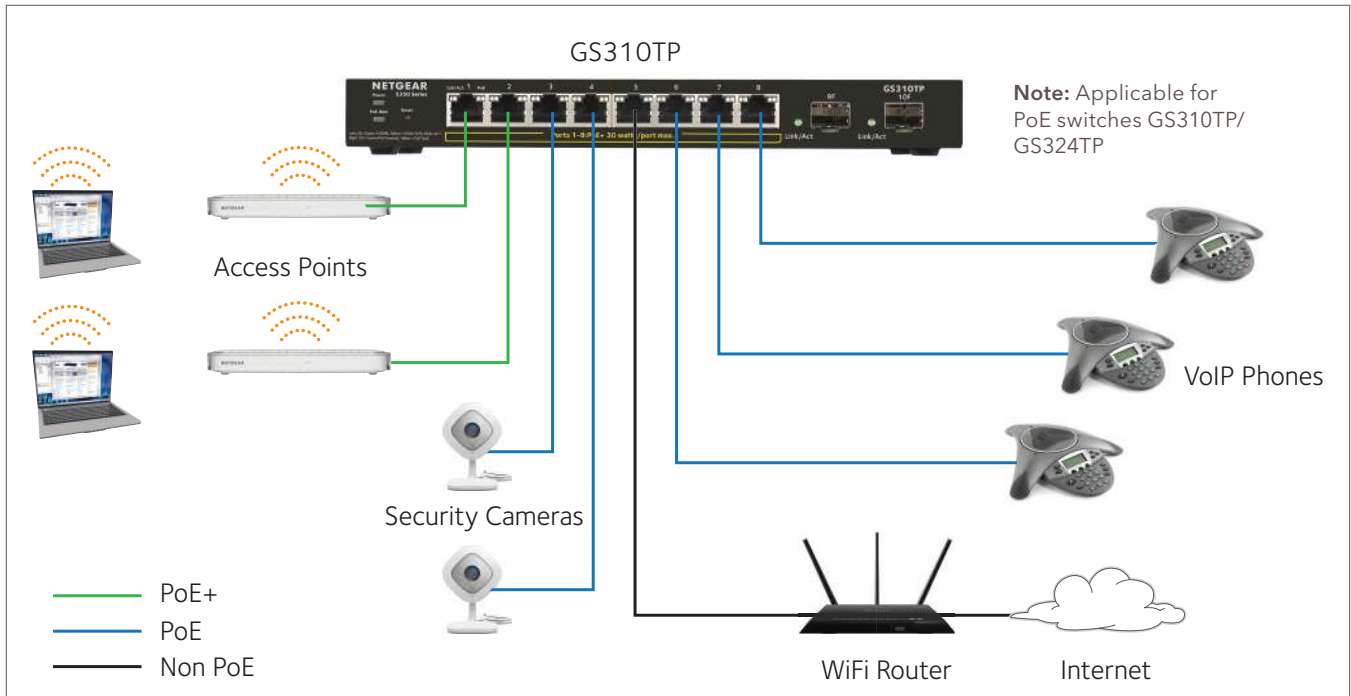
As a leading provider of network equipment for SMBs, NETGEAR® understands the importance of reliable and high performance networks that are SMB budget aware. With the growth of virtualization, cloud-based services and applications like VoIP, video streaming and IP surveillance, SMB networks need to extend beyond simple reliability to performance and security. The NETGEAR S350 Gigabit Smart Switch series is tailored to these essential network needs of your business; delivering unprecedented non-blocking Gigabit bandwidth and solid network security at an affordable cost.

What you can expect from NETGEAR S350 Series Switches:

- One-wire installation with 8, 12 or 24 Gigabit ports with PoE+ options (55W or 190W PoE total budget), and 2 or 4 SFP ports options provide not only redundant uplinks, but also build dual redundancy by a trunked uplink with link aggregation and failover redundancy.
- Quiet and Cost-effective Smart Layer2 switches with essential business class network needs, ideal for voice, video and data convergence in office application
- Smart switch features include VLAN, ACL, QoS, IGMP Snooping, LACP Link aggregation, STP and SNMP for enhanced security and reliability
- Easy-to-use Web browser-based management GUI and full control through NETGEAR Smart Control Center, no need for an IT expert
- 5-year hardware warranty with Next Business Day replacement, 90-day free technical support

Example Application

Network Convergence



Technical Specifications	GS308T	GS310TP	GS324T	GS324TP	GS348T
10M/100M/1G RJ-45 copper ports	8	8	24	24	48
PoE / PoE+ ports	-	8 PoE+ (55W PoE budget)	-	24 PoE+ (190W PoE budget)	-
1G SFP (fiber) ports	-	2 (dedicated)	2 (dedicated)	2 (dedicated)	4 (dedicated)
Performance Specification					
CPU	500MHz 128MB RAM 32MB FLASH	500MHz 128MB RAM 32MB FLASH	800MHz 512MB RAM 128MB FLASH	800MHz 512MB RAM 128MB FLASH	400MHz 512MB RAM 128MB FLASH
Packet buffer memory (Dynamically shared across only used ports)	512KB	512KB	512KB	512KB	1.5MB
Forwarding modes	Store-and-forward				
Bandwidth	16 Gbps	20 Gbps	52 Gbps	52 Gbps	104 Gbps
Priority queues	8	8	4	4	8
Priority queuing	Weighted Round Robin (WRR) and Strict Priority				
MAC address database size (48-bit MAC addresses)	8K	8K	16K	16K	16K
Multicast groups	256	256	512	512	512
Number of VLANs	64	64	64	64	64
Number of DHCP snooping bindings	8K	8K	8K	8K	8K
Access Control Lists (ACLs)	100 shared for MAC (ingress)				
Packet forwarding rate (64 byte packet size) (Mpps)	11.9	14.8	38.6	38.6	77.3
Jumbo frame support (bytes)	10K	10K	9216	9216	9216
Acoustic noise level @ 25°C (dBA) (ANSI-S10.12)	Fan-less	Fan-less	Fan-less	32.8dBA	26.0dBA
Mean Time Between Failures (MTBF) @ 25°C	2,957,592 hrs (337 yrs)	1,081,119 hrs (123yrs)	1,999,947 hrs (228 yrs)	1,328,429 hrs (152 yrs)	1,271,842 hrs (145 yrs)
1G Copper Latency (64-byte; 1518-byte; 9216-byte frames)	3.995µs; 4.202µs; 3.966µs	3.995µs; 4.202µs; 3.966µs	3.858µs; 3.868µs; 3.754µs	3.734µs; 3.749µs; 3.807µs	2.860µs; 2.920µs; 2.760µs
1G Fiber Latency (64-byte; 1518-byte; 9216-byte frames)		3.428µs; 3.666µs; 3.400µs	2.899µs; 2.937µs; 2.860µs	2.896µs; 2.903µs; 2.914µs	1.740µs; 1.720µs; 1.680µs
L2 Services - VLANs					
IEEE 802.1Q VLAN tagging	Yes				
IP-based VLANs	Yes				
MAC-based VLANs	Yes				
Auto-Voice VLAN	Yes, based on OUI bytes (default database and user-based OUIs) in the phone source MAC address				
Auto-VoIP	Yes, based on protocols (SIP). Prioritizes traffic to a higher queue				
Voice VLAN	Yes, based on either VLAN ID or 802.1p priority, packets are passed onto the connecting VoIP phone using LLDP-MED.				
Auto-Video VLAN	Yes				

L2 Services - Availability	GS308T	GS310TP	GS324T	GS324TP	GS348T
Broadcast, multicast, unknown unicast storm control			Yes		
IEEE 802.3ad - LAGs (LACP)			Yes		
IEEE 802.3x (full duplex and flow control)			Yes		
IEEE 802.1D Spanning Tree Protocol			Yes		
IEEE 802.1w Rapid Spanning Tree Protocol			Yes		
IEEE 802.1s Multiple Spanning Tree Protocol			Yes		
L2 Services - Multicast Filtering					
IGMP snooping (v1, v2, and v3)			Yes		
IGMP snooping querier			Yes		
DHCP Services					
DHCP client			Yes		
DHCP snooping			Yes		
Link Aggregation					
IEEE 802.3ad - LAGs (LACP)			Yes		
Manual Static LAG			Yes		
# of Static or LACP LAGs			8 LAGs with max 8 members in each LAG		
# of Members in each LAG			8 LAGs with max 8 members in each LAG		
Network Monitoring and Discovery Services					
802.1ab LLDP			Yes		
SNMP			v1, v2c, v3		
RMON group 1,2,3,9			Yes		
Network Security					
IEEE 802.1x			Yes		
Guest VLAN			Yes		
RADIUS-based VLAN assignment via .1x			Yes		
MAC-based .1x			Yes		
RADIUS accounting			Yes		
Access Control Lists (ACLs)			L2 / L3 / L4 ingress		
IP-based ACLs (IPv4 and IPv6)			IPv4		
MAC-based ACLs			Yes		
TCP/UDP-based ACLs			Yes		
MAC lockdown			Yes		
MAC lockdown by the number of MACs			Yes		
Control MAC # Dynamic learned entries			4096		
Control MAC # Static entries			48		
IEEE 802.1x RADIUS port access authentication			Yes		
Port-based security by locked MAC addresses			Yes		

Network Security	GS308T	GS310TP	GS324T	GS324TP	GS348T
Broadcast, multicast, unknown unicast storm control			Yes		
DoS attacks prevention			Yes		
Quality of Service (QoS)					
Port-based rate limiting	Ingress and egress	Ingress and egress	Egress	Egress	Egress
Port-based QoS			Yes		
DiffServ QoS			Yes		
IEEE 802.1p COS			Yes		
Destination MAC and IP			Yes		
IPv4 and v6 DSCP			Yes		
IPv4 and IPv6 ToS			Yes		
Weighted Round Robin (WRR)			Yes		
Strict priority queue technology			Yes		
Auto-VoIP VLAN / Auto-Voice VLAN	Yes, based on OUI bytes (default database and user-based OUIs) in the phone source MAC address				
Auto-VoIP	Yes, based on protocols SIP, H323 and SCCP. Prioritizes traffic to a higher queue				
Voice VLAN	Yes, based on either VLAN ID or 802.1p priority, packets are passed onto the connecting VoIP phone using LLDP-MED				
Auto-Video VLAN	Yes				
IEEE Network Protocols					
<ul style="list-style-type: none"> • IEEE 802.3 Ethernet • IEEE 802.3u 100BASE-T • IEEE 802.3ab 1000BASE-T • IEEE 802.3af PoE • IEEE 802.3at PoE+ • IEEE 802.3az Energy Efficient Ethernet (EEE) • IEEE 802.3ad Dynamic Link Aggregation (LACP) • IEEE 802.3z Gigabit Ethernet 1000BASE-SX/LX 	<ul style="list-style-type: none"> • IEEE 802.3x Full-Duplex Flow Control • IEEE 802.1Q VLAN Tagging • IEEE 802.1AB LLDP with ANSI/TIA-1057 (LLDP-MED) • IEEE 802.1p Class of Service (CoS) • IEEE 802.1D Spanning Tree Protocol (STP) • IEEE 802.1s Multiple Spanning Tree (MSTP) • IEEE 802.1w Rapid Spanning Tree (RSTP) • IEEE 802.1x RADIUS Network Access Control 				
Management					
Password management			Yes		
Configurable management VLAN			Yes		
Admin access control via RADIUS and TACACS+			Yes		
SNTP client over UDP port 123			Yes		
SNMP v1/v2c			Yes		
SNMP v3 with multiple IP addresses			Yes		
RMON group 1,2,3,9			Yes		
Port mirroring	Yes ingress and egress				
Many-to-one port mirroring	8	10	26	26	52
Web browser-based graphical user interface (GUI)			Yes		

Management	GS308T	GS310TP	GS324T	GS324TP	GS348T
Smart Control Center (SCC) for multi-switch management			Yes		
Dual software (firmware) image			Yes		
Cable test utility	Yes	Yes	No	No	Yes
TLS/HTTPS Web-based access (version)			Yes (v1.2)		
File transfers (uploads, downloads)			TFTP / HTTP		
HTTP upload/download (firmware)			Yes		
Syslog (RFC 3164)			Yes		
LEDs					
Per port	Speed, Link/Activity	Speed, Link/Activity, or PoE in different mode	Speed, Link/Activity	Speed, Link/Activity, or PoE in different mode	Speed, Link/Activity
Per device	Power	Power, PoE Max	Power	Power, Fan, PoE Max	Power, Fan
Physical Specifications					
Dimensions (W x D x H)	158x101x30mm (6.2x4.0x1.2in)	236x101x30mm (9.3x4.0x1.2in)	328x169x43mm (12.9x6.7x1.7in)	330x206x43mm (13.0x8.1x1.7in)	440x206x43mm (17.3x8.1x1.7in)
Weight	0.41kg (0.9 lb)	0.61kg (1.34 lb)	1.62kg (3.57 lb)	2.69kg (5.93 lb)	3.05 kg (6.72 lb)
Power Consumption					
Max power (worst case, all ports used, full PoE, line-rate traffic) (Watts)	6.4W	69.3W	13.5W	229.9W	39.1W
Max power without PoE (worst case, all ports used, line-rate traffic) (Watts)		15.1W		16.3W	
Idle power consumption (all ports link-down standby) (Watts)	2.0W	3.3W	6.5W	11.1W	25.0W
Heat Dissipation (worst case, all ports used, full PoE, line-rate traffic) (BTU/hr)	Max: 22.02 BTU/hr	Max: 236.59 BTU/hr	Max: 46.09 BTU/hr	Max: 784.88 BTU/hr	Max: 148.24 BTU/hr
Energy Efficient Ethernet (EEE) IEEE 802.3az	Yes (deactivated by default)				
Fan	Fan-less	Fan-less	Fan-less	2	1
Environmental Specifications					
Operating					
Operating temperature	0° to 40° C (32° to 104° F)		0° to 45° C (32° to 113° F)		
Humidity (relative)	95% maximum relative humidity (RH), non-condensing				
Altitude	10,000 ft (3,000 m) maximum				
Storage					
Storage temperature	-20° to 70°C (-4° to 158°F)				
Humidity (relative)	95% maximum relative humidity (RH), non-condensing				
Altitude	10,000 ft (3,000 m) maximum				

Electromagnetic Emissions and Immunity	GS308T	GS310TP	GS324T	GS324TP	GS348T
Certifications	CE: EN 55032:2012+AC:2013/CISPR 32:2012, EN 610003-2:2014, Class B, EN 61000-3-3:2013, EN 55024:2010 VCCI: VCCI-CISPR 32:2016, Class A RCM: AS/NZS CISPR 32:2013 Class A CCC: GB4943.1-2011; YD/T993-1998; GB/T9254-2008 (Class A) FCC: 47 CFR FCC Part 15, Class A, ANSI C63.4:2014 ISED: ICES-003:2016 Issue 6, Class A, ANSI C63.4:2014 BSMI: CNS 13438 Class A				
Safety					
Certifications	CB report / certificate IEC 60950-1:2005 (ed.2) + A1:2009 + A2:2013 UL listed (UL 1950)/cUL IEC 950/EN 60950 CE LVD: EN 60950-1:2006 + A11:2009 + A1:2010 + A12:2011 + A2:2013 RCM (AS/NZS) 60950.1:2015 CCC (China Compulsory Certificate): GB4943.1-2011; YD/T993-1998; GB/T9254-2008 (Class A) BSMI: CNS 14336-1				
Warranty and Support					
Hardware Limited Warranty	5 years (switch) 2 years (power adapter)	5 years (switch) 2 years (power adapter)	5 years	5 years	5 years
Technical support via phone	90 days free from date of purchase*				
Next-Business-Day (NBD) Replacement	5 years				
ProSUPPORT OnCall 24x7 Service Packs**	Category S1:	Category S2:	Category S2:	Category 1:	Category 1:
OnCall 24x7 extends the 90-day phone and email warranty entitled technical support for standard and advanced features to the length of the contract term.	PMB0S11-10000S	PMB0S12-10000S	PMB0S12-10000S	PMB0311-10000S	PMB0311-10000S
	PMB0S31-10000S	PMB0S32-10000S	PMB0S32-10000S	PMB0331-10000S	PMB0331-10000S
	PMB0S51-10000S	PMB0S52-10000S	PMB0S52-10000S	PMB0351-10000S	PMB0351-10000S
Package Contents					
Smart Switch	✓	✓	✓	✓	✓
Power Adapter	✓	✓			
Power Cord (localized to region of sale)	✓	✓	✓	✓	✓
Rackmount Kit			✓	✓	✓
Rubber footpads for tabletop installation	✓	✓	✓	✓	✓
Installation Guide	✓	✓	✓	✓	✓

Ordering Information	
GS308T-100NAS	North America, Latin America
GS308T-100PES	Europe
GS308T-100UKS	United Kingdom
GS308T-100AUS	Asia Pacific
GS308T-100JPS	Japan
GS308T-100INS	India
GS308T-100PRS	China
GS310TP-100NAS	North America, Latin America
GS310TP-100EUS	Europe
GS310TP-100AJS	Asia Pacific
GS310TP-100INS	India
GS310TP-100PRS	China
GS324T-100NAS	North America, Latin America
GS324T-100EUS	Europe
GS324T-100AJS	Asia Pacific
GS324T-100INS	India
GS324T-100PRS	China
GS324TP-100NAS	North America, Latin America
GS324TP-100EUS	Europe
GS324TP-100AJS	APAC
GS324TP-100INS	India
GS324TP-100PRS	China
GS348T-100NAS	North America, Latin America
GS348T-100EUS	Europe
GS348T-100AJS	APAC
GS348T-100INS	India
GS348T-100PRS	China
Optional Modules and Accessories	
AGM731F	SFP Transceiver 1000BASE-SX (Short range, multimode)
AGM732F	SFP Transceiver 1000BASE-LX (Long range, single mode)
AGM734-10000S	SFP Transceiver 1000BASE-T Copper RJ45 GBIC

* This product comes with a limited warranty that is valid only if purchased from a NETGEAR authorized reseller, and covers unmodified hardware, fans and internal power supplies - not software or external power supplies, and requires product registration at <https://www.netgear.com/business/registration> within 90 days of purchase; see <https://www.netgear.com/about/warranty> for details. Intended for indoor use only.

** The NETGEAR OnCall 24x7 contract provides unlimited phone and email technical support for your networking product. For ProSAFE products purchased prior to 06/2014, also includes next business-day hardware replacement.

† NETGEAR #1 in US Market Share according to NPD data for Unmanaged and Smart Switches, September 2019. NETGEAR #1 in Europe Market Share according to Context data for Unmanaged and Smart Switches, September 2019.

NETGEAR and the NETGEAR Logo are trademarks of NETGEAR, Inc. in the United States and/or other countries. Other brand names mentioned herein are for identification purposes only and may be trademarks of their respective holder(s).

NETGEAR, Inc. 350 E. Plumeria Drive, San Jose, CA 95134-1911 USA, 1-888-NETGEAR (638-4327), E-mail: info@NETGEAR.com, www.NETGEAR.com