



SYMPHONY 360 ARGB

Newly Designed All-in-One Liquid Cooler



Chromatic ARGB Lighting Pump Head



ARGB PWM Fan



EPDM & IIP High Density Tube



Water Pressure of 1.2m

The brand-new Symphony ARGB AIO liquid cooler delivers a cooling solution with unique ARGB lighting. The mirror ARGB lighting bar gives a subtle and beautiful color scheme.



Specifically designed using EPDM+IIP high-density tubes and 14 dense cooling fins, the Symphony ARGB not only extends its lifespan but also enhances the entire cooling performance. The Symphony ARGB is ready to bring you a brand-new user experience.

MIRROR ARGB LIGHTING PUMP HEAD

Designed with the high liquid flow and the low-noise pump makes it easy to have better cooling and less noise.



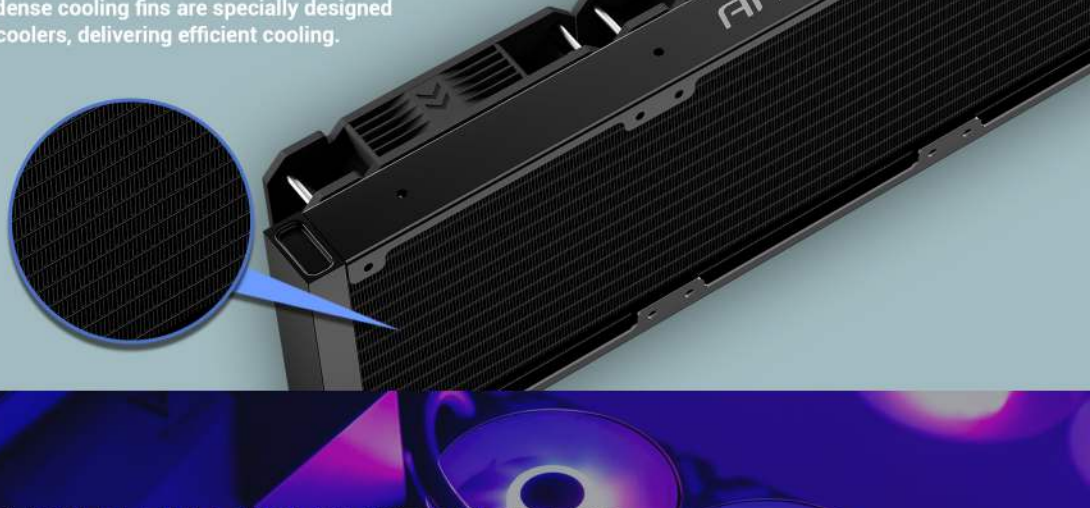
EPDM+IIP HIGH-DENSITY TUBING



The EPDM+IIP high-density tubing is very durable, making less loss of liquid. Covered with aluminum alloy, the joints of the tubing highly decrease the chance of liquid leaking.

14 DENSE COOLING FINS

The 14 dense cooling fins are specially designed for AIO coolers, delivering efficient cooling.



SYNC WITH THE MOTHERBOARD FOR 16.8 MILLION POSSIBLE COLORS

Working in sync with the motherboard or the ARGB controller, the pump can display the colors you like anytime.

* If the motherboard doesn't support ARGB signal, the pump will automatically turn to ARGB mode. If there's the ARGB signal, the pump will work in sync with the motherboard.

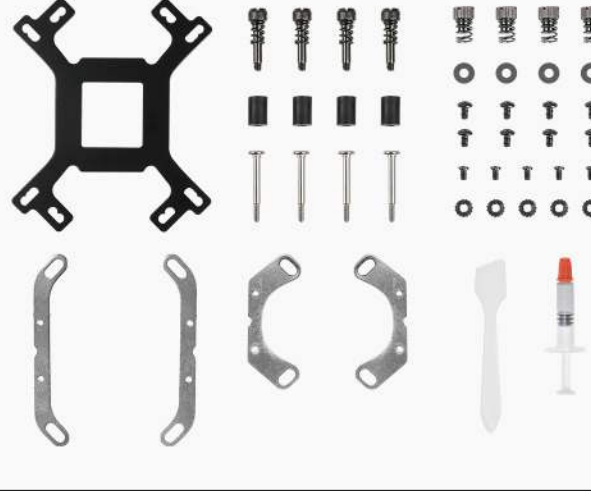
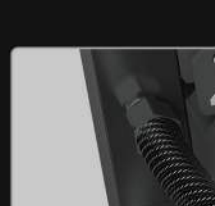
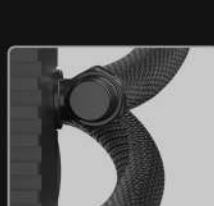
THE ARGB PWM FAN

The ARGB PWM fan delivers thermal control, shock absorption, and high airflow. Meanwhile, it provides the CPU a better cooling solution.



SOCKET COMPATIBILITY

Intel: LGA2066/2011/1366/115X/1200
AMD: FM1/FM2/AM4/AM3/AM2



SPECIFICATION

Cooling Type	Water Cooling
FAN	
Dimensions	120 x 120 x 25 mm
Type	PWM ARGB LED Fan
Speed	800 - 1600rpm ± 100
Airflow	72 CFM max.
Noise	20-35db (A)
Air Pressure	2.1 mm H ₂ O Max
Lifespan	40000 hours at 25°C room, ambient 15-65% RH
Connector	Fan: 4pin, ARGB: 3pin
RADIATOR	
Dimensions	397 x 120 x 27 mm
Material	Aluminum, Polycarbonate
CPU BLOCK HEAD	
Dimensions	66.7 x 67 x 56 mm
Connector	3-pin Power
Water Pressure	1.2m
Flow Rate	1.3L / min
Lifespan	70000 hours at 25°C room, ambient 15-65% RH
Noise	≤ 30dB (A)
TUBE	
Dimensions	8 x 10 x 380 mm
MISCELLANEOUS	
Socket Compatibility	Intel Socket: LGA 1200/115X/1366/2011-V3/2066 AMD Socket: FM2/FM1/AM3+/AM2+/AM2/AM4
Warranty	3 Years
UPC#	0-761345-74044-9