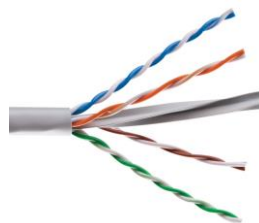


Category 6 UTP Cable – LSZH



High Speed Gigabit Ethernet UTP 250 MHz Class E / Category 6 Cable Consists of HDPE Insulated 8 x 23AWG Solid Bare Electrolytic Grade Copper Conductors Twisted as 4 Pairs, Rip Cord and LSZH Outer Jacket. These Structured Cable Suitable for Gigabit Ethernet (1000Base-T) Requirement for Applications such as High Speed Data, Voice & Video Signals over LANs, Server Farms and Other Bandwidth Sensitive Indoor Applications. This cable guarantees Category 6 performance ensuring maximum network speed, data throughput and efficiency

Features

- Complies to ANSI-TIA 568.2-D for Category 6 & ISO/IEC 11801 for Class E
- Fire Rating as per IEC 60332-1
- Cable Characterized up to 250 MHz
- Maximum throughput, reliability and performance
- 4 Pair Separator Design
- UL Listed and ETL Verified
- Covered under 3C3[®] Performance Warranty

Mechanical Specifications

Conductor AWG	:	23
Conductor Material	:	Solid bare Copper
Conductor Count	:	8
Insulation Material	:	High Density Polyethylene
Pairing	:	2 insulated conductor twisted together
No. of pair	:	4
Color Code	:	
Pair #1	:	Blue White and Blue
Pair #2	:	Orange White and Orange
Pair #3	:	Green White and Green
Pair #4	:	Brown White and Brown
Drain Wire	:	No

Category 6 UTP Cable – LSZH

Outer Sheath	:	LSZH
Outer Sheath Color	:	Grey – RAL 7035
Outer Sheath Thickness	:	0.6mm
Overall cable diameter	:	5.9±0.30mm
Sequential Marking	:	At every meter
RIP Cord	:	Yes
Cross filler	:	HDPE

Electrical Specifications

Characteristic Impedance	:	100Ω±15%
Conductor Resistance(DC)	:	≤93.8Ω/1000m
Resistance Unbalance	:	5% max
Mutual Capacitance	:	<5.6nF/100m
Capacitance Unbalance	:	330pF/100m
Delay Skew	:	<45ns
NVP	:	69%
Bending radius	:	4X cable diameter
Pulling force	:	11.5kg
Maximum propagation delay	:	490ns/90m
@250MHz		
Maximum Attenuation	:	35.9dB
@250Mhz & 90m		
Return loss@250MHz & 90m	:	8.0dB
NEXT@250MHz & 90m	:	33.1dB
PS NEXT @250MHz & 90m	:	30.2dB
ACRF(ELFEXT) @250MHz & 90m	:	15.3dB
PSACRF @250MHz & 90m	:	12.3dB

Environmental Specifications

Installation Temperature	:	0°C to 50°C
Storage Temperature	:	-20°C to +75°C
Operating Temperature	:	-20°C to +60°C

Category 6 UTP Cable – LSZH

Flame Properties	
Flammability Test	: IEC 60332-1
Acid Gas Emission Test	: IEC 60754-1
Smoke Density Test	: ASTM 2843
Packing	: Reel of 305 Meters in Plane Box
Printing	: YY/MM 3C3 Length in Meters
Nominal Weight	: 14.0 Kg

Regulatory Compliances/Certifications

- ETL Verified
- UL Listed
- RoHS Certified

Ordering Information

Product Code	Description
10200	High Speed Gigabit Ethernet UTP 250 MHz Class E LSZH Cable, C6